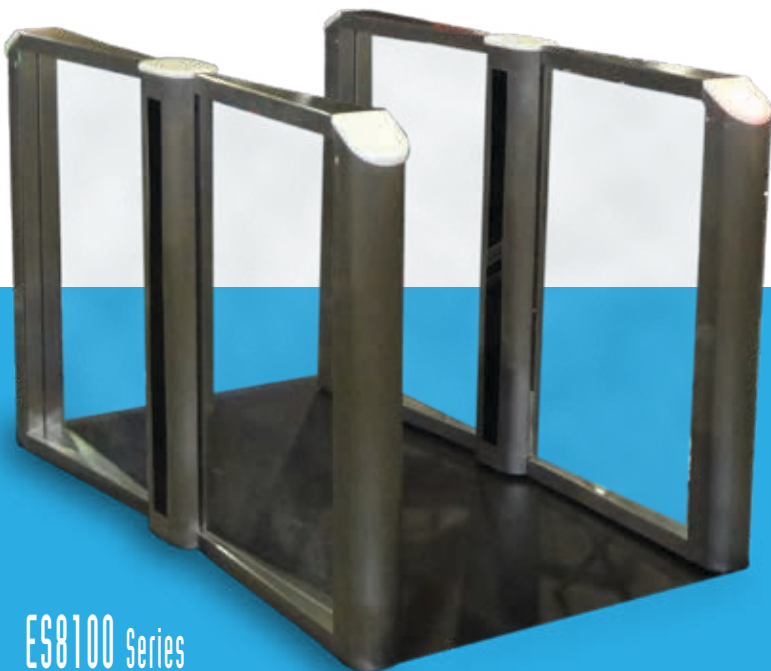


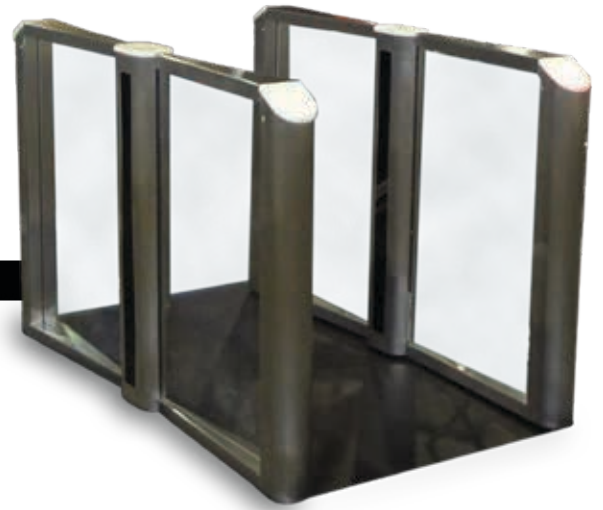
ES8100

Optical Turnstile

Designed for lobby/entry applications where styling is important, the ES8100 Optical Turnstile provides aesthetically pleasing pedestrian passageways to controlled or restricted areas. These units will monitor high throughput pedestrian traffic flow of up to 60 people per minute per lane, while optical sensors ensure only one person enters for each authorized I.D. card presented.



ES8100 Series



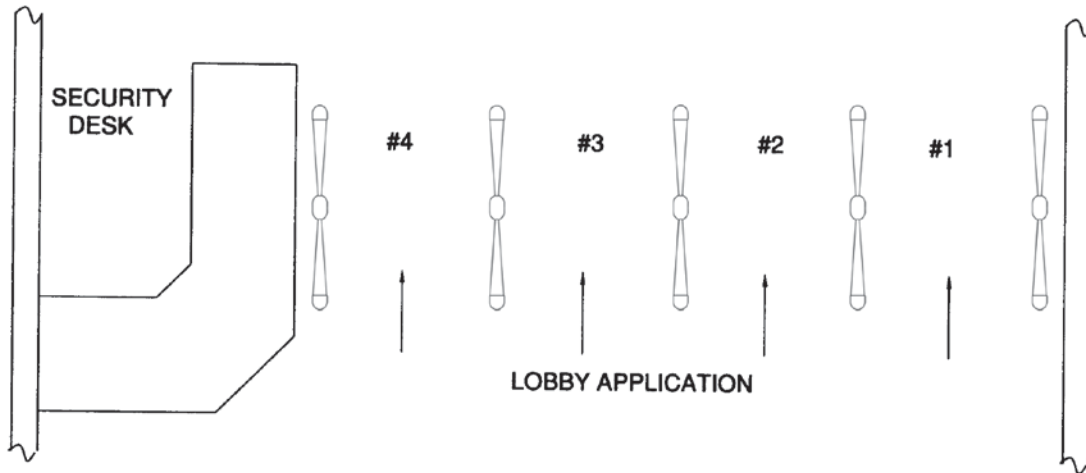
FEATURES & BENEFITS

- Complements any architectural styling
- Encourages employees to maintain access control procedures
- Compact, space conscious design
- No moving parts
- Detects tailgating
- Compatible with all access control systems
- Field configurable for card in/card out or card in/free exit operation
- Reduces number of personnel needed to monitor building entry/exit points
- High throughput easy entry or exit for authorized personnel
- Excellent servicability
- ADA compatible

DSI[®]
DESIGNED SECURITY, INC.
A Detex Company

Designed Security, Inc.
302 Detex Drive
New Braunfels, TX 78130
800-272-3555
512-321-4426

www.dsigo.com
dsi@dsigo.com



ELECTRICAL SPECIFICATIONS

Power:	12 VDC @ 700 mA/walkway
Control Input:	N/O-Momentary "Valid A card" (max. 1sec. pulse closure) N/O-Momentary "Valid B card" (max. 1sec. pulse closure) N/O-Momentary/Maintained "Remote bypass"
Control Output:	Form "C" Alarm contact status Form "C" "A" passage complete contact status Form "C" "B" passage complete contact status All relays rated at 1 Amp @ 30VDC
Audible Alarm:	80 dB @ 3 ft.

MECHANICAL SPECIFICATIONS

Size:	60.00" L x 38.00" H x 4.38" W
Mounting:	Steel bases w/ (6) 3/4" mounting holes and 2" conduit hole in center stantion
Finish:	Top Surface: Stainless Steel with glacier ice translucent end cap Side Panel: Acrylic panel and Satin Brushed Stainless Steel

CRITERIA FOR DESIGNING AN OPTICAL TURNSTILE WALKWAY

1. Determine the number of walkways required based on the desired pedestrian throughput and space availability. A conservative estimate of pedestrian throughput is up to 60 people/min., per walkway. This figure assumes the use of a fast response (1/4 sec.) card reader system.
2. Walkway bollards should be spaced 24" - 37" apart. Wider spacing may result in pedestrians attempting to pass through the lane two – abreast, resulting in a high incident of alarms.



Designed Security, Inc.
 302 Detex Drive
 New Braunfels, TX 78130
 800-272-3555
 512-321-4426

www.dsigo.com
dsi@dsigo.com