



ES820 OPTICAL TURNSTILE COMPONENT PACKAGE

Designed Security, Inc. Optical Turnstile Component Package is offered for installations where the walkway bollards are to be fabricated in the field.

This approach is useful when the architectural design dictates the need to integrate the optical turnstile directly into existing furniture/fixtures or when local finish materials have been specified for the bollards.

The compact design of the various components facilitates the design and fabrication of the bollards. Designed Security, Inc. engineering staff offers assistance in the placement and use of the components.

ES810/ES811

ES820/ES821

ES831

ES840

ES850

ES860

ES870

ES880

ES810/ES811
ES820/ES821
ES831
ES840
ES850
ES860
ES870
ES880

Electrical Specifications

- Power:** 12 VAC @ 6 Amp/Walkway; transformer included
- Inputs:** N/O dry contact/card reader for valid card
N/O dry contact/card reader for invalid card (optional)
N/O dry contact to override lane operation
- Output:** N/O alarm contact for walkway violation - 500 mA @ 30 VDC
N/O dry contact for invalid card

Mechanical Specifications for the Bollard

- Graphic Array:** 3"W x 6"H x 2.5"D
- Control Unit:** 4"W x 18"L x 9"H

Wiring Requirements

Input From Card Reader System:

- N/O contact for "valid card"
- N/O contact for "invalid card"
- N/O contact for "bypass"

Output From Optical Turnstile:

- N/O contact for "alarm"
- N/O contact for "invalid card"

Power: 12 VAC @ 6 amps; transformer included

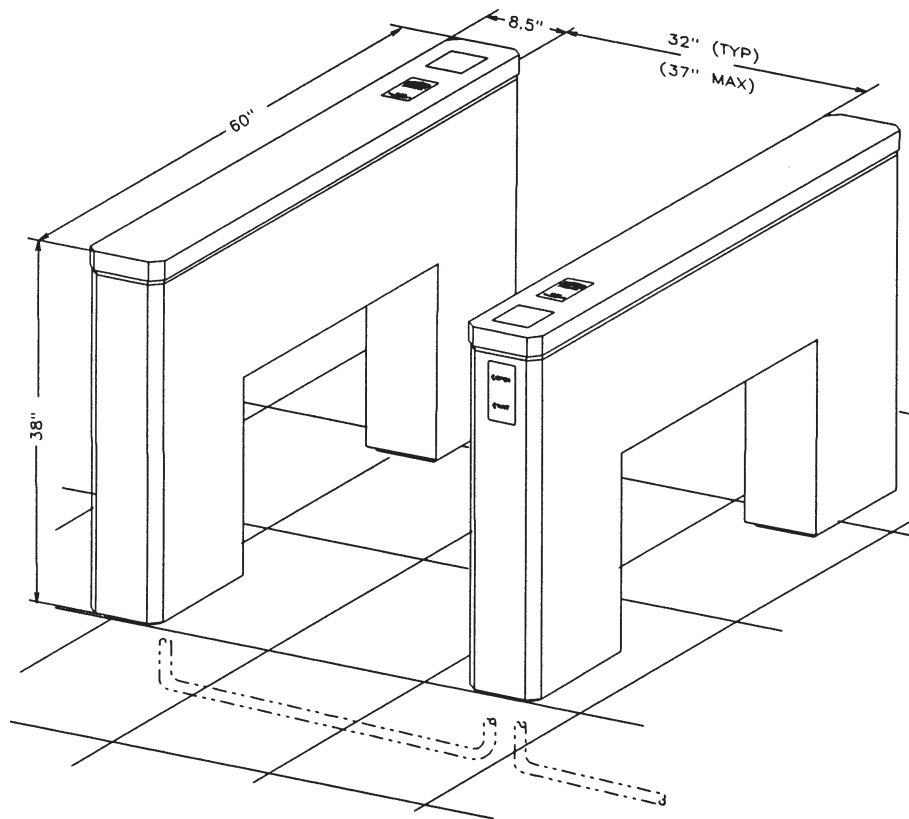
- use #14 wiring for run of 50' or less and #12 wiring for 50' to 100'

Bollard to Bollard: (required only for bi-directional walkways)

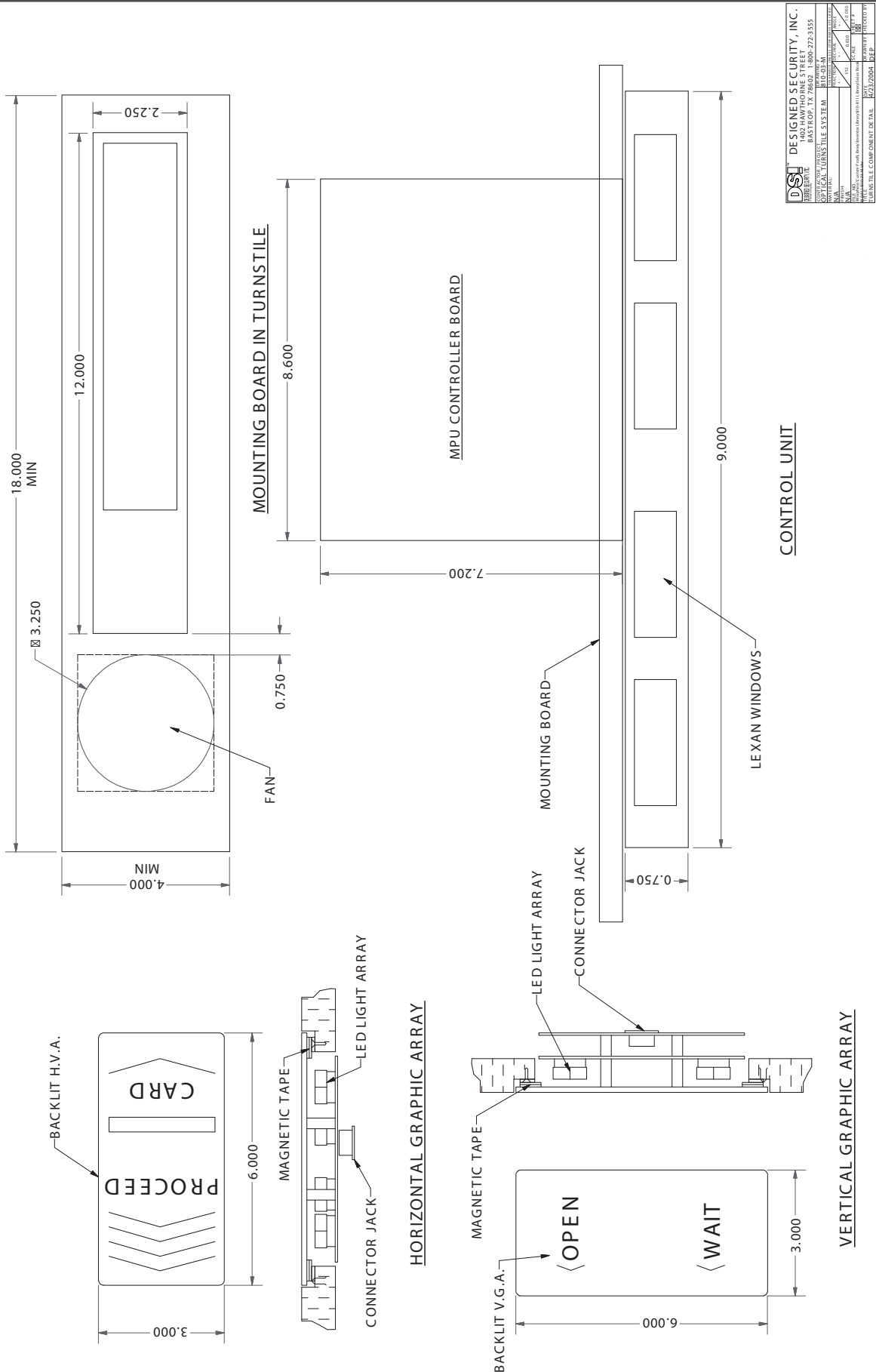
- Vertical graphic array control (4-#26 cond - provided by DSI)
- Horizontal graphic array control (8-#26 cond - provided by DSI)

Optical Turnstile Design Criteria

1. Determine the number of walkways required based on the desired pedestrian throughput and space available.
2. Using a fast response (<1¼ sec.) card reader system, typical pedestrian throughput is:
 - Swipe card reader - 20 to 25 people per/min.
 - Proximity card reader - 25 to 30 people per/min.
3. Bollards should be spaced 30" to 37" apart. Wider spacing results in pedestrians attempting to pass through the walkway two abreast, resulting in a high incidence of alarms. The 37" spacing meets most local codes for handicap access.
4. Bollards are secured to finished floor using anchor bolts at both end pedestals. Wiring is routed via conduit to either end pedestal.



ES880 ES870 ES860 ES850 ES840 ES831 ES820/ES821 ES810/ES811



DSI DESIGNED SECURITY, INC.	
1000 WASHINGTON STREET BOSTON, MA 02111-1000	
TEL: 617-552-3300 FAX: 617-552-3305	
WWW.DSISIG.COM	
DATE: 08/09/08	REV: 04
BY: [Signature]	CHKD: [Signature]
APP: [Signature]	DATE: 08/09/08
THIS IS A COMPONENT DETAIL. SEE THE DRAWING FOR THE TURNSTILE COMPONENT DETAIL.	