

OPERATION:

- The ES600 Series and Custom DSI Zone Annunciators offer an attractive unit that can be used to monitor the status of a N/C (default, N/O by special order) dry contact input. [Custom and Modified units are identified by a Custom Job Number or a Modified ES600-XXX series model number]
- The standard ES600 series units may monitor from 4, 8, or 12 zones. These are available as wall mount, and optionally as desktop models.
- If an Input Zone is violated, the corresponding Zone's Red LED will flash, and the (N/O) Global Alarm Output will change state, and the Audible alarm will sound until acknowledged by pressing the "ACK" button. (labeling may differ on Custom units)
- After Acknowledgement, the Red LED will remain on until the Input contact is restored to normal.

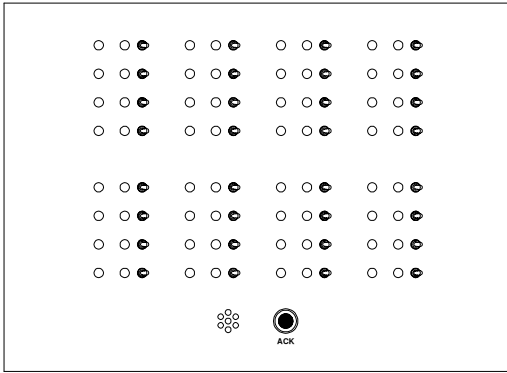
Options:

- Zone Output Relays are provided to pass on zone status to remote monitoring equipment, via dry contact. (N/O default, N/C by special order)
- Shunt Switches are provided to bypass each zone. LED goes Green when in Shunt/Bypass mode.
- Supervised Input circuits are provided to monitor for tampering of the input connection and to annunciate a Tamper condition with an Audible Alarm and Amber LED. (See Page 2 for detail)

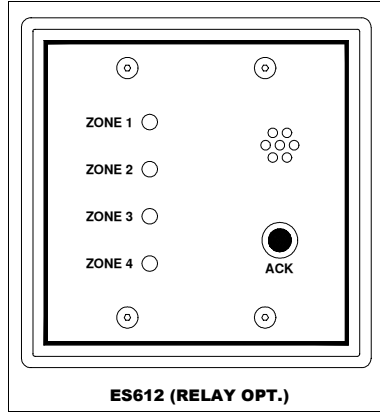
INSTALLATION:

- Place a grounded, 2 ½" deep electrical box (1,2, or 3-Gang, as appropriate) at an accessible spot on the wall. (Custom: Desktop, Rack Mount and other Panels may be mounted as per customer specification.)
- Connect the cable shield, green ESD ground strap, and electric box to building ground.
NOTE: Failure to properly ground the electrical box, cable shield, and ESD ground strap may result in Non-Warranty Damage to the Annunciator as a result of electrostatic discharge during normal use.
- Connect the Input pairs to each zone to be monitored. See detail on next page. (Input is N/C default, N/O by special order)
- If **Global Alarm Relay Output** monitoring is specified, connect the Gray wires (from Sounder) to a remote monitoring station.
- If **Zone Relay Output option** was ordered with unit, connect appropriate wires from the zone outputs to the remote monitoring equipment. See diagram on next page for wiring detail. (N/O default, N/C custom)
- If **Supervision option** was ordered with unit, see diagram on next page for wiring detail. The Yellow and Gray pairs on the connector are N/C Tamper Output, and N/C Alarm Output, respectively.
- Connect to a 12VDC* power source to the Red (+) and Black (-) wires. *See Current requirements in "Specifications" on reverse. Additional detail on next page.

TECHNICAL REFERENCE



CUSTOM PANEL W/SHUNT & SUPERVISION OPTIONS



ES612 (RELAY OPT.)

WIRING NOTES:

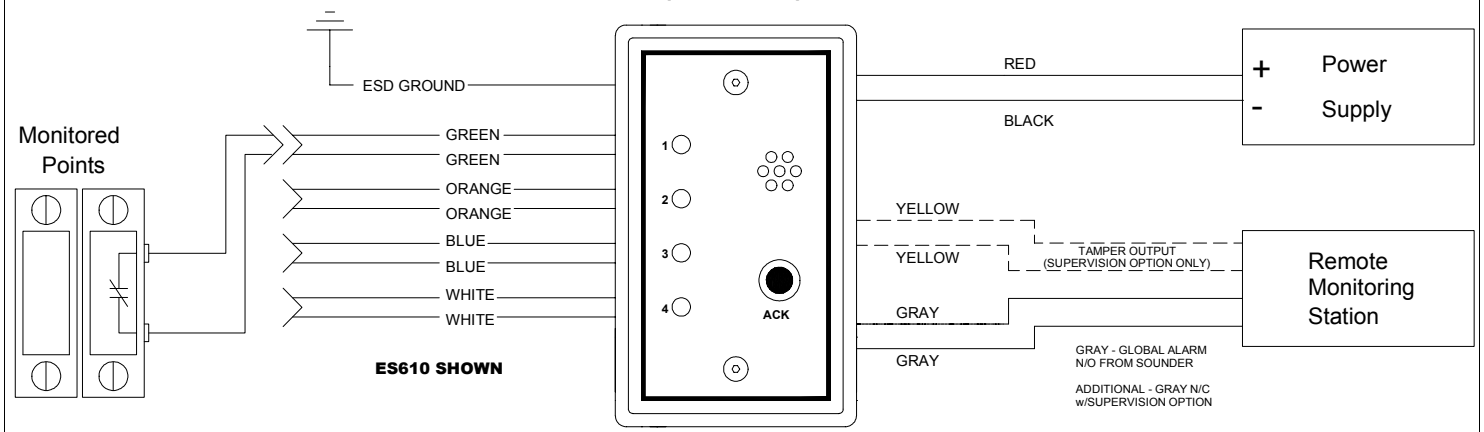
Wire Colors and associated Functions are the same on all ES600 and Custom products.

Supervision Option has unique Power/Output board and connector. See "SUPERVISION OPTION I/O"

Supervision Option has unique Input requirements. See "WIRING DIAGRAM FOR SUPERVISION OPTION"

Some **Custom and Modified** products may have different Input and Output characteristics. Job Specific instructions are provided for these units.

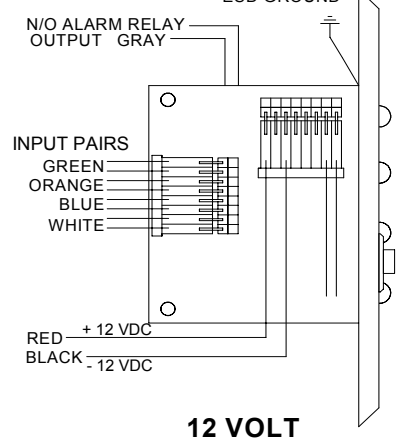
WIRING DIAGRAM (12 VOLT)



SPECIFICATIONS

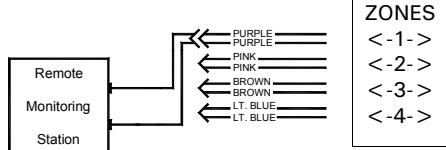
Model:	ES600 - 12 VDC Series	Power:	12 VDC
	ES610 - 4 Zones		@150mA
	ES620 - 8 Zones		@300mA
	ES630 - 12 Zones		@500mA
	CUSTOM -		Calculate using above data
Adjustments:	None	Input:	N/C Dry Contact (Standard)
Mounting:	1 gang X 2.5" ES610-611	Outputs:	All Dry Contacts - 500 mA@30 VDC
	2 gang X 2.5" ES612-621		Global Alarm N/O (Gray/from Sounder)
	3 gang X 2.5" ES622-631		Relay N/O (w/Relay Option only)
	4 gang X 2.5" ES632-635		Global Alarm N/C (w/Supervision only)

STANDARD

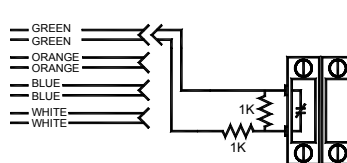


OPTIONS WIRING

WIRING DIAGRAM FOR RELAY OPTION



WIRING DIAGRAM FOR SUPERVISION OPTION



SUPERVISION OPTION I/O WIRING

