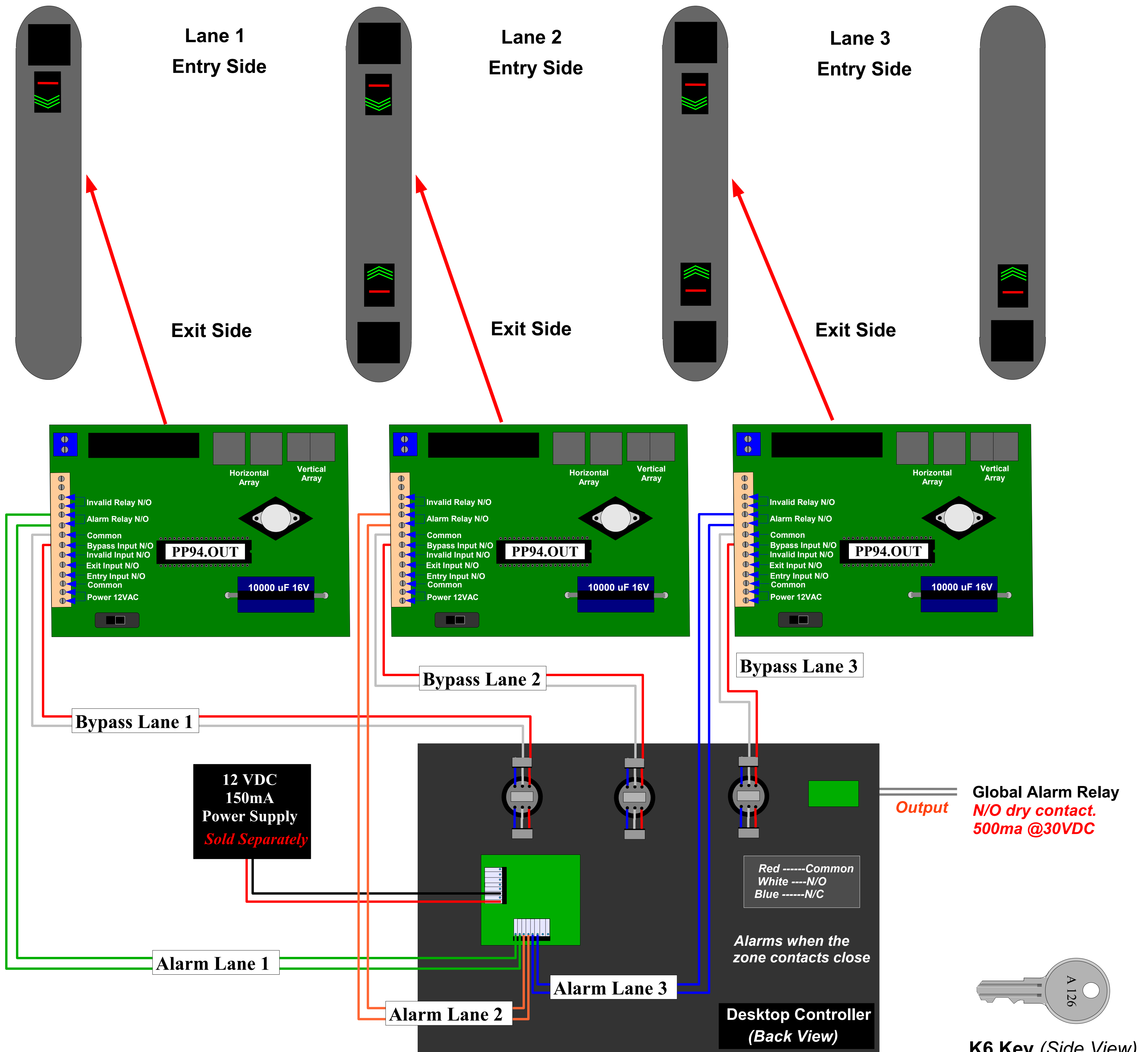


# ES811-N2 Desktop Controller



**Note:** Wire Gauge:  
 22 AWG = Signal wires  
 22 AWG = Power wires  
 (Power runs over 50 feet use 18 AWG)

**Desktop Specifications:**  
 Power: 12VDC at (150mA)  
 Input: N/O dry contact  
 Output: Key Switch Status. "Form C" dry contact  
 Output: Global Alarm Relay. "N/O" dry contact  
 Horn Volume: 70 db

